

VISIT

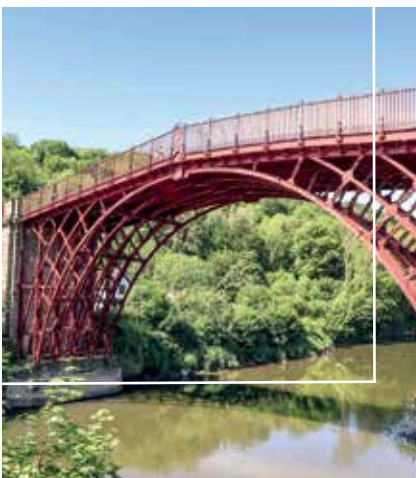
SHROPSHIRE



Guide



FREE



— visitshropshire.co.uk —

Welcome to Shropshire



Welcome to Shropshire, a county where location and history have combined to give us romantic hills and castles, award-winning events and delicious eateries.

We are home to a UNESCO world heritage site in Ironbridge Gorge, an Area of Outstanding Natural Beauty in the Shropshire Hills and the most varied landscapes from meres, rivers and canals to endless footpaths through fields and forests.

Shropshire is one of Great Britain's last remaining rural idylls, relax and unwind in our fine restaurants, cosy pubs and elegant bars after shopping in some of our unique independent shops found throughout our charming towns of Ludlow, Shrewsbury and Oswestry to name but three. Shropshire is a county where little legs can run wild and older legs can discover and unwind.

Now you know more about us when are you coming to explore?



4-8 Explore Shropshire

- 5 Oswestry & North Shropshire
- 5 Shrewsbury & Central Shropshire
- 7 Shropshire Hills & South Shropshire
- 7 Telford & Ironbridge

9 Info

11 Travel

12-25 Things to Do

- 15 Activities & Adventure
- 17 Walking in Shropshire
- 19 Culture & Arts
- 21 Attractions
- 23 Historic Sights
- 25 Shopping

26-27 Markets

29-31 Events


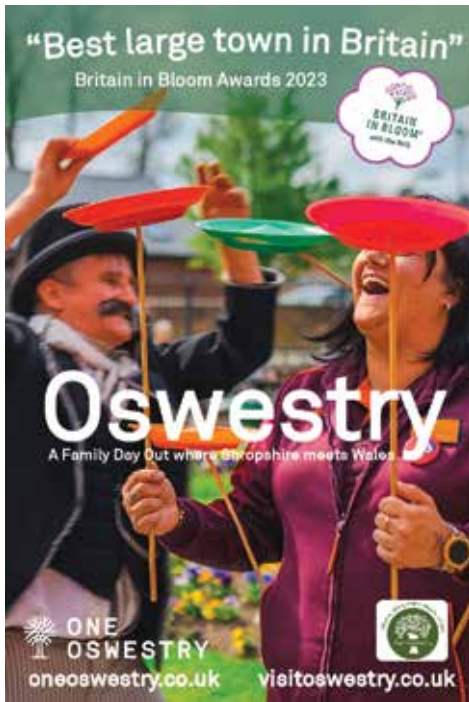
32-39 Sleep

- 35 B&Bs
- 37 Caravans & Camping
- 39 Self Catering

40-49 Eat & Drink


- 43 Restaurants
- 45 Pubs & Bars
- 49 Cafes & Tearooms

"Best large town in Britain"
Britain in Bloom Awards 2023

Oswestry
A Family Day Out where Shropshire meets Wales

ONE OSWESTRY
oneoswestry.co.uk visitoswestry.co.uk



ORIGINAL SHREWSBURY

Discover endless independents, your favourite big names, tastebud tingling eateries and bars, in a town with over 1,000 years of history

ORIGINALSHREWSBURY.CO.UK




WHITCHURCH
SHROPSHIRE

VISIT WHITCHURCH
an historic market town

BURSTING WITH INDEPENDENT SHOPS, GREAT EATERIES AND HISTORICAL BUILDINGS THAT TELL A FASCINATING TALE
EXPLORE WHITCHURCH TODAY



MARKET DRAYTON
A QUINTESSENTIAL MARKET TOWN

Located in North Shropshire, Market Drayton is a traditional market town with origins dating back to before the Domesday book. The bustling and vibrant market is still held every Wednesday and attracts residents from all over Shropshire and surrounding counties.

Market Drayton's streets have much historic character with a mix of half-timbered, Georgian and Victorian buildings.

The Shropshire Union Canal is a short walk from the town centre and offers some delightful circular countryside walks.





VISIT SHROPSHIRE

OSWESTRY & NORTH

North Shropshire is where you will find meres, canals and quirky market towns. From the border town of Oswestry, almost circled by the Welsh foothills, across the Shropshire Plain to Whitchurch and Market Drayton.

Visit Oswestry for traditional street markets and a flourishing indoor market. The town has won Britain in Bloom best large town in 2023 so expect lots of colour, friendly folk and history that goes back to Old Oswestry iron age hillfort. We think you'll also love Whitchurch and Market Drayton. Make a stop at Ellesmere too. This pretty market town is surrounded by 9 lakes or meres and we call it Shropshire's Lake District.



VISIT SHROPSHIRE

— SHREWSBURY & CENTRAL

Shrewsbury is Shropshire's county town and birthplace of Charles Darwin, encircled by a meandering loop of the River Severn. Within its loop are distinctive churches, Shrewsbury Castle, beautiful timber-framed houses and a sweeping riverside parkland known as the Quarry.

Shopping is great in Shrewsbury especially if you are a fan of the varied independent boutiques, giftshops, galleries and more. Our vibrant, exciting indoor Market Hall, packed with quirky shops and exciting food stalls, has been voted Britain's Favourite Market.



Park Hall

Countryside Experience

Join us on our award-winning farm
for non-stop **FUN!**

The **perfect day out** for all the family!

- Indoor Play
- Outdoor Play
- Burrowland
- Goat Playground
- Pig Racing
- Tractor Rides
- Special Events

Open Daily 10am - 5pm

Park Hall, Oswestry, Shropshire, SY11 4AS

Tel: 01691 671123 • Email: info@parkhallfarm.co.uk

parkhallfarm.co.uk



**FOR ALL YOUR COACH
HIRE REQUIREMENTS IN
SHROPSHIRE & MID WALES**

Owen's
COACHES

Established Over 50 Years

We offer a 'one stop' solution for all
your transport & travel requirements



- UK & Continental Tours
- Sporting Events
- Day Excursions
- Social Clubs
- Stag & Hen Groups
- Airport Transfers
- Business Travel

Booking Services Including Hotels, Ferrys, Attractions, Guides, etc

 01691 652126

 www.owenstravel.co.uk

**Coaches Available
From
8 - 78 Seats**

VISIT SHROPSHIRE

HILLS & SOUTH

Much of south Shropshire is a designated Area of Outstanding of Natural Beauty (AONB) – official recognition that its diverse landscape (hills, farmland, rivers and woodland) are vital to wildlife, tranquillity, culture and enjoyment. You need only glance at the ancient hills and rolling patchwork landscape to realise the importance of protecting this beautiful part of Shropshire. Our most famous hills include the Stiperstones (which during Victorian times were the location of Europe’s largest lead mines) and the heather-topped Long Mynd which means ‘long mountain’ in Welsh. Want to explore more? Try a summer trip on the Shropshire Hills Shuttle buses.



VISIT SHROPSHIRE

TELFORD & IRONBRIDGE

There was a time when the place now known as Ironbridge Gorge was the centre of the world. At least in industrial terms. In recognition of the region’s contribution to life as we know it, Ironbridge Gorge is now a UNESCO World Heritage site. Home to the bridge itself, and ten living history museums.

Explore Telford town centre’s Southwater culture and leisure quarter. This is the place for entertainment. Watch the latest blockbuster at the IMAX cinema, take a spin at Telford Ice Rink and catch a gig at super-cool Albert’s Shed. Cheer on your favourite music acts at the QEII Arena and Telford International Centre. The Telford Centre is also packed to the rafters with 160 shops and restaurants.



VisitOswestry.co.uk



Friendly
Historic
Surprising
Visit Oswestry
Where Shropshire
meets Wales





INFO

Find all the information you need

Where ever you plan to visit in Shropshire, you'll find knowledgeable and helpful people who are happy to share its wonders with you. To help get your started and plan your perfect visit, why not call one of our many visitor information centres... happy planning!



Visitor Information Centres

Shrewsbury
01743 258888

Oswestry
01691 662753

Ironbridge
01952 433424

Whitchurch
01948 665761

Wem
01939 232299

Church Stretton
01694 722535

Craven Arms
01588 676060

Ludlow
01584 813705

Much Wenlock
01952 727679

Bridgnorth
01746 763358

Market Drayton
01630 653364

Bishops Castle
01588 630023

Sabrina Boat Trips

The Best Way To See Shrewsbury - Around The River Severn Loop



10% off Day Trips
Code: Y324

Sailing everyday March - October | Six trips on the hour | 11am - 4pm

Live commentary | Dogs welcome | Discounts for groups/concessions/children
Refreshments | Table service | Evening cruises | Meal & cruise

01743 369741 | www.sabrinaboat.co.uk

The Summer House

Holiday Home

The Summer House is a unique getaway for two, set in the stunning Shropshire countryside. The beautifully decorated octagonal tower is complete with exposed oak beams and a wood burner. The views from the rooms and private patio, look out over an orchard and the surrounding fields to the Wrekin and Shropshire Hills.



R A B Y
SHROPSHIRE

shropshire@raby.co.uk 01952 740223

www.raby.co.uk/stay/holiday-cottages



Travel Shropshire

Explore our county with ease

It's easy to get around Shropshire once you arrive. Shropshire has 19 National Rail stations, including at Shrewsbury, Church Stretton, Ludlow, Gobowen, Telford, Wellington, Cosford and Whitchurch. These give us excellent links to London, Birmingham, Manchester and Cardiff.

Shropshire has National Express coach links from London, stopping in Shrewsbury and Telford. A comprehensive Shropshire bus network will take you to our towns and villages across the county. In summer special shuttle buses connect many of south Shropshire's most popular tourist spots.

Shropshire park and ride services are in Shrewsbury, Bridgnorth, Ludlow and Ironbridge giving you car-free access to our market towns. Make the most of free parking in Oswestry and Shrewsbury on Sundays.

www.tfw.wales

www.westmidlandsrailway.co.uk



Groups & Coaches

Group travel in Shropshire is a brilliant idea, however large or small your group. Shropshire has the space to accommodate you, the facilities to ensure your trip runs smoothly, and an abundance of attractions to please every guest.

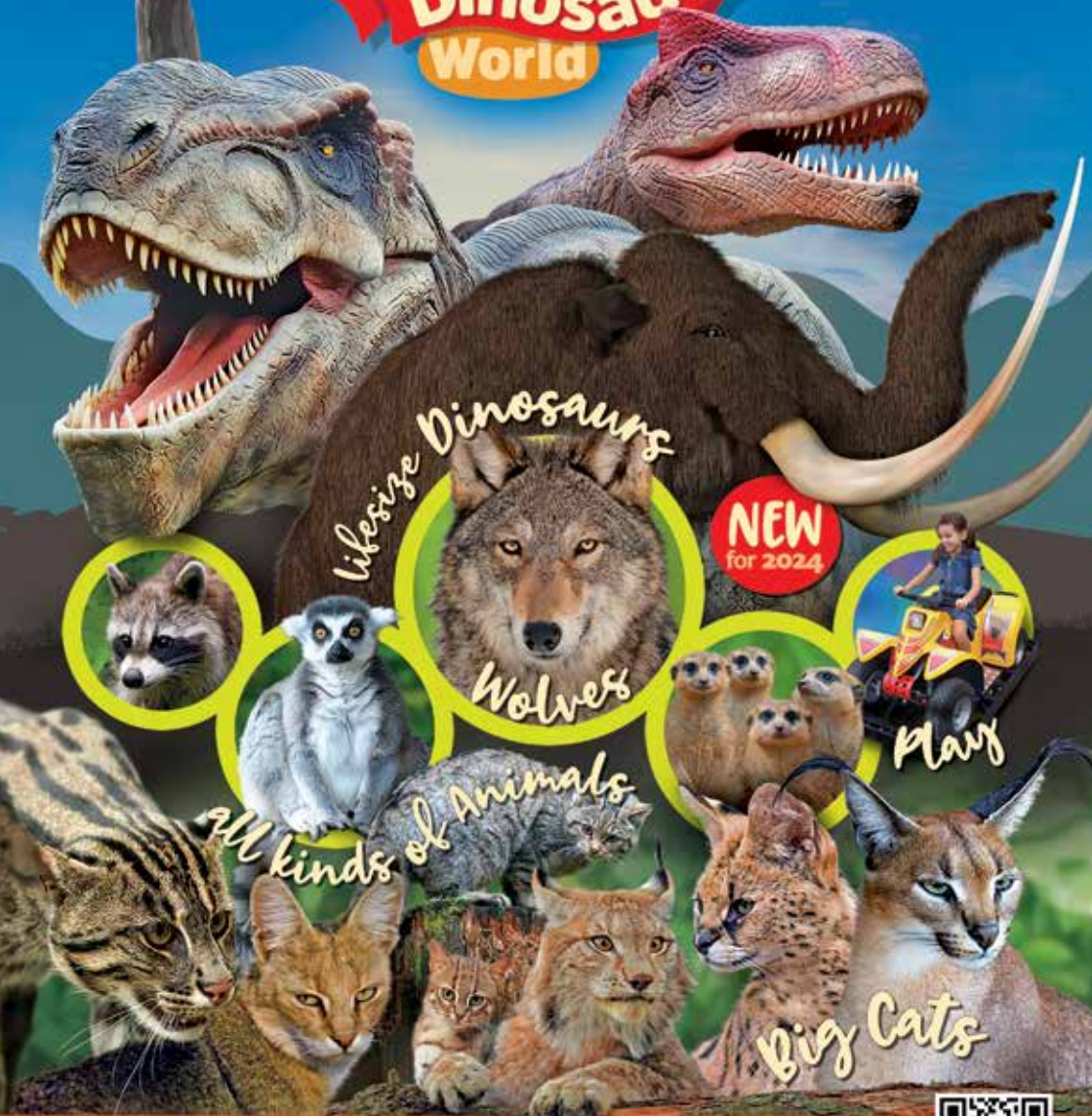
Many Shropshire stately homes and castles offer private guided tours, allowing your group unique access to the stories of England's most intriguing homes. Don't forget to ask for Shropshire prune damson jam – it's widely accepted to be the defining element of Shropshire cream tea.

For further information and for group bookings please visit:

www.visitshropshire.co.uk



Hoo Zoo & Dinosaur World



Lifesize Dinosaurs

NEW
for 2024

Wolves

all kinds of Animals

Play

Big Cats

ADMISSION BY PRE-BOOKING ONLY at www.hoo-zoo.com

Hoo Zoo & Dinosaur World, Telford, Shropshire TF6 6DJ Tel: (01952) 677917

Sat Nav reference: Humber Lane What 3 Words: koala.crawling.playfully

Scan me ▶





THINGS TO DO

Choose how to spend your Shropshire Stay

You could spend a year in Shropshire, exploring every day, and still have adventures left in store. Shropshire is especially rich in historic sites and opportunities for outdoor activities. Our timeless landscape is perfect for relaxation. With an exciting food scene and charming market towns, Shropshire is also a wonderful county for eating, drinking and independent shopping. Have fun planning your perfect Shropshire break and don't forget to check out Shropshire's many events and festivals.

Cheshire

BewILDerwood

The Curious Treehouse Adventure

Award Winning Family Fun!

Book online! BeWILDerwood.co.uk

TELFORD STEAM RAILWAY

THE FRIENDLY RAILWAY

Visit us Easter to September

Open Sundays and Bank Holiday Mondays

JUST PAY ONCE AND RIDE ALL DAY

WWW.TELFORDSTEAMRAILWAY.CO.UK

TF4 2NF - CLOSE TO IRONBRIDGE

BRITISH IRONWORK CENTRE

SHROPSHIRE'S BEST ATTRACTION FREE FOR KIDS

TEL: 01691 610952 Oswestry, Shropshire, SY11 4JH

www.britishironworkcentre.co.uk

Activities & Adventure

Get active or take it slowly - this is Shropshire

Shropshire outdoor leisure activities include mountain biking, clay pigeon shooting, quad trekking, archery, climbing, paintballing and fishing. You can even glide over the Long Mynd in a two-seat glider.

From the hills and valleys of the south to the meres of the north, Shropshire offers infinite adventures. We have miles of footpaths for casual ambles and lengthy rambles. Long-distance adventures include the Shropshire Way and Offa's Dyke Path.

If you love to get out on water, try canoeing, rafting or stand-up paddleboarding on the stunning River Severn. Why not take yourself adrift in a raft along the spectacular Severn Gorge, floating beneath the iconic Ironbridge. For a more sedate experience, take a narrowboat out on our canals in north Shropshire.

We can't promise year-round sunshine but rainy days in Shropshire are great opportunities for indoor entertainment: shopping, swimming or spa days, soft play for children, cinema, bowling or simply relaxing by the fire in a cosy Shropshire pub.

We also have miles of cycle paths, including along old railway lines, and

adrenaline-inspiring downhill courses. Shropshire bridleways for horseriding include the Jack Mytton Way and Humphrey Kynaston Way, named after two notorious Shropshire horsemen.





Forestry England

Explore

Haughmond Hill

Escape outdoors in this beautiful, hillside forest.

Enjoy fantastic views across Shropshire, follow in the footsteps of local history or treat yourself in the café.

Find us just outside Shrewsbury.

0300 067 4935

Haughmond Hill

Join today

As a member you'll be supporting Haughmond Hill and get free onsite parking, forest updates and discounts

forestryengland.uk/membership

forestryengland.uk/haughmond-hill



SHROPSHIRE'S HERITAGE

Discover a Victorian farm, medieval castle and more



Stokesay Castle | Wenlock Priory | Wroxeter Roman City | Boscobel House



ENGLISH HERITAGE



BOOK ONLINE **SAVE 10%**





Walking in Shropshire

An adventure all around the county

Shropshire is one of England's least densely populated counties. It's a deeply rural part of the world. Encompassing verdant hills, ancient woodlands, windswept moorland and mysterious lakes, the scenery can be spectacular. A quarter of the county is covered by the Shropshire Hills Area of Outstanding Natural Beauty, much of which is just as beautiful as our national parks.

Pretty much the whole of Shropshire is fantastic for walking. The countryside is criss-crossed with nearly 3500 miles of footpaths, bridleways and byways, and there are also several long-distance walking routes to throw into the mix. The 200-mile-long Shropshire Way spreads in a figure of eight loop over the county. Some 28 miles of Offa's Dyke Path National Trail passes through Shropshire.

On our website we've picked out nine walks. All are circuits – you start and finish in the same place – and are day walks. They take in some of Shropshire's best scenery, sometimes visit impressive historical sites, and in most cases take you well away from the crowds.



There's a wide variety in the length and difficulty of the walks and for each walk we've identified who it is most suitable for. Go online and let your walking adventure begin!

Scan the QR code for more details.



LUDLOW CASTLE

SHROPSHIRE



One of the finest
medieval ruins in the UK

Café

Weddings

Gift Shops

Exhibitions

Self-Catering

Attractions

Events and holiday activities held throughout the year – check our website for details

01584 873 355

www.ludlowcastle.com



St Chad's Church

www.stchadschurchshrewsbury.com

St Chad's Terrace, Shrewsbury, SY1 1JX



St Alkmund's Church

www.stalkmundschurch.co.uk

St Alkmund's Square, Shrewsbury, SY1 1UH



SIDNEY
NOLAN
TRUST

2024 Opening
21 March - 28 September
Thurs - Sat, 11am - 4pm

Exhibitions | Events | Workshops | 17th Century House & Gardens



Centre for the Arts

founded by Sir Sidney Nolan

The Rodd, Presteigne, LD8 2LL
www.sidneynolantrust.org



Culture & Arts

Let Shropshire open your eyes

Shropshire doesn't just give you tranquil surroundings, rich history and amazing food. All year round, Shropshire has a vibrant arts and culture scene to inspire and entertain.

At Shropshire theatres you can catch nationally touring drama, comedy, live music, musicals, pantomime, and plays for children. As well as big-name cinemas in Shropshire, plus screenings in other performance spaces around the county.

We love festivals in Shropshire, depending on the timing of your visit you could attend a classical music recital in a beautiful church or visit the open studios of artists. Watch comic artists drawing live, enjoy one of the county's food festivals, attend a book talk with a famous author, or dance in a field with hundreds of other music fans.

Travel through the ages to see everything from a woolly mammoth to Roman treasure, and right up to decades of 20th century pop culture.



NOW AT LUDLOW FARMSHOP



OPEN EVERYDAY
LUDLOW
ESTD DISTILLERY 2018
— THE HOME OF —
LUDLOW GIN & WHISKY

SHOP | DAILY TOURS | BAR | GIN SCHOOL

* Discover * Fordhall Organic Farm

FREE to visit and experiences for all the family!

Arthur's Farm Kitchen



- * Local, seasonal & organic dishes.
- * Meeting/function room available.
- * Family & dog friendly.
- * Mud kitchen & Betty the Tractor.

Farm Shop, butchery & bakery

- * Fordhall's own pasture fed meats.
- * Local & organic produce.
- * UK wide delivery available.



Free Farm Trails



- * Play in the woods.
- * See happy free-range animals.
- * All terrain mobility scooter hire.
- * Dogs welcome on leads. 🐾

Open Tuesday-Sunday.

Office: 01630 638696 * Shop: 01630 317531
www.fordhallfarm.com * Fordhall Organic
Farm, Tern Hill Road, Market Drayton, TF9 3PS



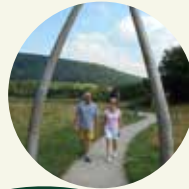
Shropshire Hills Discovery Centre

the home of Grow Cook Learn

Discover Shropshire's food,
history and landscape

Just off the A49 in
Craven Arms

Meet the Shropshire mammoth
and see a panoramic film over the
Shropshire Hills in the exhibition.
Explore 30 acres of meadow and
enjoy delicious local food, all made
from scratch on the premises in
the licensed cafe.



Family activities

Walks

Gift shop

Regular events

Licensed cafe

Exhibition

Riverside Meadows

01588 676 060

Open daily 10am - 5pm

www.shropshirehillsdiscoverycentre.co.uk





Attractions

See something new in Shropshire with every visit

Thanks to a vast array of attractions in Shropshire, each visit to our beautiful county can bring you a completely different experience.

Families with young children may love roaming free in our countryside parks and forests, or through the luxuriant gardens and grounds of Shropshire's castles and big houses. Explore the country's first 'theme park', an intriguing landscape of caves and follies, at Hawkstone Park. Or why not discover the award-winning British Ironwork Centre – home of the famous Knife Angel.

Shropshire is home to several fun farm attractions where you can get up close to animals: feed a lamb, walk with a hawk, brush an alpaca or ride a pony. Heritage railway lines are another popular Shropshire attraction. Hop on board a vintage train, listen for the whistle and enjoy the old-fashioned scent of steam as you chug through timeless Shropshire scenery.

Need some inspiration? We can help you plan your visit and show you the best attractions on our website: www.visitshropshire.co.uk



PLAN YOUR VISIT AND BOOK TICKETS AT
SVR.CO.UK | 01562 757 900



Get ready for take off!

Discover Cold War stories in immersive Hotspots; explore thrilling displays of aircraft, vintage cars, models, tanks and even life-sized Russian dolls.

The Royal Air Force Museum Midlands offers a fun, entertaining day out for all the family. Entry is free and we're open daily from 10.00am.

Free admission (parking charges apply)



rafmuseum.org/midlands
01902 376 200

The Royal Air Force Museum is incorporated by Royal Charter (RC000922) and is a charity registered in England and Wales (1197541)

Historic Sights

Travel back in time

In Shropshire, landscape and history have always shaped each other. From the iron age fort at Oswestry which once protected the Shropshire border to the astonishing remains of the fourth largest Roman city in Britain at Wroxeter, Shropshire history is waiting for you to discover.

See where the Industrial Revolution sparked to life in Ironbridge Gorge and explore more of the Unesco World Heritage site with its ten

museums. Call in at the medieval town of Much Wenlock, where a Victorian doctor was inspired to launch the modern-day Olympic Games and where there are now annual Wenlock Olympian Games.

You can even see a descendant of the oak tree that sheltered Charles II from Parliamentarians during the English Civil War. The tree and King Charles's story are why we have so many pubs in England are called the Royal Oak.



FASHION, FOOD & FUN

Shop the latest trends and stop for
a bite to eat in the heart of Shrewsbury.

M&S
EST. 1884

SKECHERS

COSTA

PRIMARK

H&M

LEVELUPESCAPES

#Entertainer
TheJoyShop.com

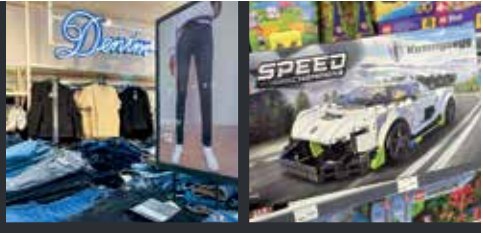
F.HINDS

THE
COLLECTIVE
SHREWSBURY

Clarks

Find us on Pride Hill, Shrewsbury

Shrewsbury-Shopping.co.uk   



CAMBRIAN HERITAGE RAILWAYS

'Journey back in time from the heart of Oswestry'



Operating Steam & Diesel Trains from Easter to Autumn with Santa Specials in November and December.

Trains run at weekends and on selected weekdays.
Visit our website for further details and to plan your visit:
www.cambrianrailways.com



Cambrian Heritage Railways,
Old Station Building,
Oswestry, Shropshire, SY11 1RE



Welshpool & Llanfair

Light Railway
wllr.org.uk

01938 810441

SY21 0SF

8 miles of scenic track
Tearoom and shops

A great day out for all the family



Shopping

Get yourself a little Shropshire treat

Shopping bags and spending money at the ready. Telford Centre is Shropshire's biggest retail destination. An amazing 25 acres of indoor shopping space houses all the major UK high street stores. With plentiful parking and well-known restaurants, Telford is a one-stop shopping dream. Indoor leisure activities at Southwater will keep non-shoppers amused while you browse to your wardrobe's content.

Shropshire is a county where small, independently owned businesses are treasured. Some shops have been running for many generations, loved for their specialist knowledge and traditional approach. Try Shrewsbury with its national award-winning Market Hall and Wyle Cop – a curving street believed to have the longest uninterrupted run of independent shops in the country. Or Ludlow & Oswestry which both have street markets of food, crafts and vintage ware. Whatever your interests, you're guaranteed a grand day's spending in Shropshire.



Visit the national award-winning Shrewsbury Market Hall, a vibrant food, drink and shopping destination that's bursting with quirky and creative independent businesses.

Voted 'Britain's Favourite Market' in 2023 and 2018, it has become one of the most popular destinations in Shrewsbury in recent years, attracting more than 50,000 visitors a month.

The two-tiered market is home to some 60 traders, ranging from quality food retailers and cool cafes and bars to homeware, gift, clothing and vintage boutiques, handcrafts, original art and more.

The market is located between Shoplatch and Claremont Street, in the heart of town, with its iconic

1960's redbrick clock tower soaring above the skyline for miles around.

Traders say you can buy nearly everything you need under one roof in the market – from fresh produce, flowers and spices to rugs, mugs, cards, cookware, hats and jewellery.

Find traditional family butchers, freshly-caught Cornish seafood, local cheeses and charcuterie, home-grown vegetables and more.



Pull up a seat to enjoy flavours from around the world, artisan gins and natural wines. Explore pretty homeware and gift shops. Mooch vintage and preloved book and record shops. Chat to artists and designer-makers.

A few evenings a year the market opens for Late Nights. Normal trading hours are Tuesdays to Saturdays, 10am to 4pm (a selection of retail stalls and cafes are open Thursdays).

Traders say you can buy nearly everything you need under one roof in the market...



Shropshire's Markets

Bishop's Castle

Bishop's Castle Town Hall hosts a flea market on the first Saturday of the month, and a farmers' market on the third Saturday.

Bridgnorth

Bridgnorth holds a market along the high street and beneath the Town Hall on Fridays and Saturdays. A speciality Sunday market takes place twice a month from March to December.

Ludlow

Ludlow holds daily markets in Castle Square (apart from Tuesdays), with a farmers' market on Thursdays.

Market Drayton

A market so good, they named the town after it! Street and indoor markets take place in Market Drayton on Wednesdays from 9am to 3pm.

Much Wenlock

Much Wenlock has been a market town for over 800 years. It has daily markets in the Corn Exchange, the Square and in the Buttermarket under the Guildhall.

Oswestry

Oswestry's Town Market: The indoor market is open Wednesday, Friday and Saturday. Outdoor street markets on Wednesday and Saturday and don't miss the Artisans' market on last Friday of the month.

Shrewsbury

Shrewsbury's award-winning Market Hall on Claremont Street is open on Tuesdays, Wednesdays, Fridays and Saturdays from 8am to 4pm (with occasional late-night openings). Farmers' and specialist markets also take place in the Square.

Wellington

Wellington has a fully heated indoor market with over 120 shopping units, plus outdoor market space. Wellington Market trades on Tuesdays, Thursday and Fridays from 9am to 4pm and on Saturdays from 9am to 4.30pm.

Wem

Wem has its market in the Town Hall and on the high street on Thursdays from 9am to 2pm.

Whitchurch

A Weekly Market takes place in Whitchurch's Market Hall on St Mary's Street, and outside the Civic Centre in the High Street, on Fridays from 7.30am to 12.30pm. A monthly Artisan Market takes place in the town's Bullring on the first Saturday of every month.



m
Shrewsbury Market Hall

GREAT BRITISH MARKET AWARDS WINNER 2023
BRITAIN'S FAVOURITE MARKET

Shop. Eat. Drink.

Discover the multi award-winning Shrewsbury Market Hall

Open Tuesday-Saturday, 8am-4pm
(selection of cafes & stalls open Thursdays)

**Find us beneath the clock tower
Claremont Street, Shrewsbury SY1 1HQ**

www.shrewsburymarkethall.co.uk

  @markethallshrewsbury  @markethallshrew





Centre for Alternative Technology
Canolfan y Dechnoleg Amgen

FFORIO • DYSGU • DARGANFOD

Rhaglen lawn o ddigwyddiadau

Caffi llysieuol

Coetiroedd a gerddi hardd

Croeso i gŵn

EXPLORE • LEARN • DISCOVER

Packed events programme

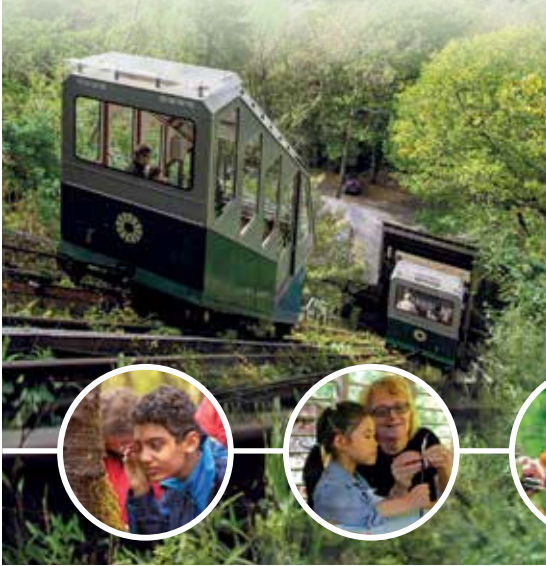
Vegetarian Café

Beautiful woodlands and gardens

Dogs welcome

cy.cat.org.uk • cat.org.uk

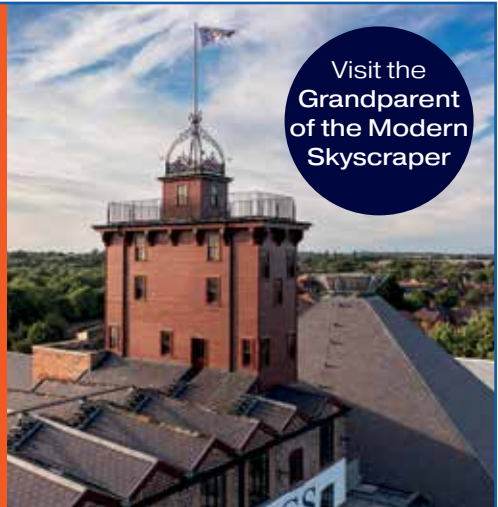
01654 705950



SHREWSBURY FLAXMILL MALTINGS

There's lots to see and
do at **Shrewsbury
Flaxmill Maltings**

The Mill Exhibition & Shop
Family Activities and Fun Events
Behind-the-Scenes Guided Tour
Turned Wood Café



Visit the
Grandparent
of the Modern
Skyscraper

Find out more at ShrewsburyFlaxmillMaltings.org.uk

SUSTAINABLY RESTORED BY



Historic England

IN PARTNERSHIP WITH



FUNDED BY





Events

There's always something going on in Shropshire

Oswestry & North Shropshire

The Street Circus Oswestry

30 March

www.oneoswestry.co.uk/event-category/whats-on/

Market Drayton 10K

12 May

www.marketdraytonrunningclub.com/market-drayton-10k/

Beach in Town Oswestry

25-26 May

www.oneoswestry.co.uk/event-category/whats-on/

AlderFest

5-6 July

www.alderford.com

Oswestry Food & Drink Festival

6-7 July

www.visitoswestry.co.uk

Ginger & Spice Festival

28 September

www.gingerandspicefest.co.uk

Arts Fest

October - last week

www.draytonartsfestival.org

Festival of Lights

November

www.marketdrayton.gov.uk

Scan the QR code
for more events
in Oswestry and
North Shropshire



Shrewsbury & Central Shropshire

Loop Fest

3-5 May

www.loopfest.co.uk

Shrewsbury Food Festival

29-30 June

www.shrewsburyfoodfestival.co.uk

Let's Rock

13 July

www.letsrockshrewsbury.com

JLS in The Quarry

14 July

www.theatresevern.co.uk

Shrewsbury Flower Show

9-10 August

www.shrewsburyflowershow.org.uk

Shrewsbury Folk Festival

23-26 August

www.shrewsburyfolkfestival.co.uk

Shrewsbury Steam Rally

25-26 August

www.shrewsburysteamrally.co.uk

Shropshire Oktoberfest

4-5 October

www.shropshireoktoberfest.co.uk





Shrewsbury Flower Show
Friday 9th and Saturday 10th August 2024

SO MUCH MORE THAN A FLOWER SHOW



For further information call **01743 234050** www.shrewsburyflowershow.org.uk

Day and weekend tickets
on sale now

P@ndemonium!
Children's Festival

refolkus
Youth Festival

- ★ The best in folk, Americana & world music
- ★ Camping & glamping
- ★ Real ale & cocktail bars
- ★ Ceilidhs & dance
- ★ Artisan crafts
- ★ Food village

SHREWSBURY FOLK FESTIVAL
23-24-25-26 AUG 2024

West Mid Showground

shrewsburyfolkfestival.co.uk





Events

There's always something going on in Shropshire

Shropshire Hills & South Shropshire

Bishops Castle Arts Festival

14-18 February
www.bishopscastleartsfestival.com

Green May Day, Clun

5-6 May
www.clungreenman.org.uk

Ludlow Spring Festival

10-12 May
www.ludlowspringfestival.co.uk

Ludlow Fringe Festival

13-23 June
www.ludlowfringe.co.uk

Burwarton Show

1 August
www.burwartonshow.co.uk

Farmer Phil's Festival, Ratlinghope

9-11 August
www.farmerphilsfestival.com

Ludlow Food Festival

13-15 September
www.foodfestival.co.uk

Michaelmas Fair, Bishops Castle

21 September
www.michaelmasfair.org.uk

Longmynd Hike

October
www.longmyndhike.org.uk

Devil's Chair Dawdle or Dash

Boxing Day
www.sproson.com/dawdle-or-dash

Telford & Ironbridge

Wellington Italian Scooter Day
May

Cosford Air Show – RAF Cosford
9 June
www.cosfordairshow.co.uk

Newport Show
19 July
www.chetwynddeerpark.co.uk/newport-show

Telford Balloon Fiesta
August
www.telfordtownpark.co.uk

Camp Bestival
15-18 August
www.shropshire.campbestival.net

Wellington Walking Festival
9-16 September
www.wellingtonwalkersarewelcome.org.uk/festival



GLAMPING PODS & TOURING PITCHES SHROPSHIRE



01584 861 431
 jane@greenwaytouringandglamping.co.uk
www.greenwaytouringandglamping.co.uk
 Greenway, Shawbank, Craven Arms SY7 9LU



stay at Tudor House Properties

Sophisticated self catering boltholes in the heart of historic Ludlow

Aragon Cottage

2 bedrooms | sleeps 4 | parking | dog friendly | garden
 ✉ aragoncottage104@gmail.com
 🌐 aragoncottage.com

Hideaway Cottage

1 bedroom | sleeps 2 | parking
 ✉ hideawaycottage960@gmail.com
 🌐 hideawaycottage960.com

📍 @tudorhousepropertiesludlow ☎ 07896 852865

Our spacious, award-winning, pet friendly holiday barns are situated in the heart of the tranquil hamlet of Marton in rural North Shropshire just 10 miles from Shrewsbury

The Drift House, Springfield Barns, Marton, Shrewsbury SY4 3SA

01939 809 838
www.springfieldbarns.co.uk



SLEEP

Find a place to stay in our relaxing county

After all your exploring, you're not short of places to rest your head in beautiful Shropshire. We're low on light pollution so we can offer you dark nights and starry skies for a peaceful night's sleep. Stay deep in the Shropshire countryside, or check into a town centre residence within easy walking distance of pubs, restaurants and bars. Explore your hotel, B&B, self-catering and alternative accommodation options here.

The Croft

4* Family Run Bed & Breakfast



We have 11 en-suite bedrooms each individually furnished to a high standard. We can offer various room configurations depending on your needs. We also have a cottage, The Saltbox, that can sleep 5 people.

All rooms have TV/DVD players plus well-stocked Tea/Coffee trays and WiFi is available throughout.

There is a comfortable guest lounge and beautiful dining room with many period features including Inglenook fireplaces.

The building is Grade 2 listed and is 150 yards from Bridgnorth's High Street.

The Croft
St. Mary's St
Bridgnorth
WV16 4DW

01746 762416
thecroft@outlook.com
www.croftotelbridgnorth.co.uk

THE MALTSTERS HOUSE, LUDLOW



- Old world charm with modern comfort
- Spacious 5* Grade II listed cottage
- Sleeps flexibly, 10 - 14 people with up to 6 bedrooms and 5 bathrooms
- High walled courtyard garden
 - Free parking permit
 - Perfect family getaway

07831 537835

www.themaltstershouse.co.uk



HILL VALLEY HOTEL • GOLF • SPA

Set within the glorious north Shropshire countryside, **Hill Valley Hotel, Golf and Spa** is a tranquil retreat with fabulous facilities for a relaxing break.

- Spa & Vital leisure club
- 2 x 18-hole golf courses
- Weddings
- Meeting & events



Scan the QR code for more information or email:
sales.hillvalley@macdonald-hotels.co.uk

Tarporley Road, Whitchurch,
Shropshire SY13 4HA | 0344 879 9049



B&Bs

Find your perfect bed and breakfast stay in Shropshire

What could be more English than spending the night in a B&B? Shropshire has an abundance of comfortable bed and breakfast properties, some on farms and many in our market towns and villages. Booking a guesthouse B&B in Shropshire is the ideal way to see inside a traditional English property. Often, you'll be staying in the home of the B&B owners, who are happy to share ideas about walks and places to visit.

After a refreshing night's sleep, you'll be treated to breakfast – as big or small as your appetite dictates. Try a English cooked breakfast, with sausages and bacon sourced from Shropshire farms. Even better if your breakfast is cooked on an Aga. The famous range ovens began life in Shropshire, in Coalbrookdale, and for Brits today they're evocative of cosy farmhouse kitchens.

Book your beautiful B&B stay direct through www.visitshropshire.co.uk.


Westbrook
 Country Holiday Park
Premier 5 Star Touring Park






Pretty site on banks of River Teme
 Fully serviced, spacious hard-standing pitches
 River Teme fishing
 Perfect for walkers and bird watchers
 Showers / toilets, dishwasher and laundry
 Childrens play area. Dogs welcome
 15 mins to Ludlow, 30 mins to Hereford
 Open March - November

Westbrook Park, Lynch Lane
 Little Hereford, Ludlow, Shropshire
 SY8 4AU. 01584 711280
www.westbrookpark.co.uk
info@westbrookpark.co.uk







Pass the Keys[®]

Book your perfect stay in one of
 our many charming holiday-lets
 across Shropshire



Contact us to find out more
 ☎ Vicky or Andy: shropshire-support@passthekeys.co.uk
 ☎ +44 (0) 1694 - 247832



Booking Website:
book.passthekeys.com/destination/shropshire

THE DINNEY

**FARMHOUSE BED & BREAKFAST
 & SELF CATERING COTTAGES**
 IN THE SHROPSHIRE COUNTRYSIDE





Our holiday cottages accommodate between 3 and 20 guests in both traditionally converted barns or contemporary new cottages. All with breathtaking panoramic views.

T: 01746 861070
 E: INFO@THEDINNEY.CO.UK
WWW.THEDINNEY.CO.UK


 CHELMARSH, BRIDGNORTH,
 SHROPSHIRE, WV16 6AU





ACCESSIBLE ACCOMMODATION

Newton Meadows Cottages

Accessible Holiday Cottages with ground floor bedrooms, guaranteed 'no steps'
 Wheel in wet room
 Large car park next to cottages
 Complimentary Wi-Fi
 Rural location with countryside views
 No pets
 Ed and Lesley Simcox

Harmer Hill, Shrewsbury SY4 3EA
 07851 298 054 | newtonmeadows@hotmail.com
www.newtonmeadows.co.uk



Caravans & Camping

Pitch up in Shropshire

With big skies and miles of open space, Shropshire is an idyllic county for camping and caravanning. Pitch up in Oswestry the gateway to Wales or try the foothills of the mighty Long Mynd.

You'll find we have the perfect Shropshire campsite for every type of camper. Go rural and wild, far from the madding crowds. Or choose a Shropshire campsite with every home comfort – perfect for families with children. Many of our best-loved campsites are within easy walking distance of real ale and food pubs, giving you the best of both worlds.

You can hook up your own caravan in Shropshire, or choose a site with static caravans. If you're not ready for all-out camping, glamping options in Shropshire include camping pods, cabins, yurts and shepherds' huts.

**19 Upper Linney
Ludlow
SY8 1EF**

Simply one of the nicest cottages for two to relax and unwind in the heart of the old town. Well located for restaurants, pubs, castle, church and all town attractions. Great for walking and exploring the area. High quality Hypnos Super King bed. Sunny courtyard garden. Smart TV, Wi-Fi/Alexa. Welcome pack. Free on-street parking. Short breaks welcome, any day arrival, open all year. No pets.

01584 831136
r.thomas800@btinternet.com
www.upperlinney.co.uk



**Hurst Farm
Holiday Cottages**

Located in an area of outstanding natural beauty in the heart of the Shropshire countryside, **Hurst Farm Holiday Cottages** are the ideal holiday home for those who wish to experience the countryside at its best.

- Six self-catering cottages in the heart of Shropshire
- Peaceful location, easily reached from most of UK
- Private fishing lakes - free for guests
- Open all year, pet friendly
- Free Wi-Fi and wheelchair accessible



www.cottagefishingholidays.co.uk



**IRONBRIDGE
HOLIDAYS**

by eley's of ironbridge

A LOVELY SELECTION OF SELF
CATERING PROPERTIES IN AND
AROUND IRONBRIDGE

BOOK DIRECT | IRONBRIDGEHOLIDAYS.CO.UK

01952 987895



A SPECTACULAR SELECTION
OF ROOMS IN THE HEART OF
IRONBRIDGE

BOOK DIRECT | BRIDGESIDEROOMS.CO.UK



**BRIDGESIDE
ROOMS, IRONBRIDGE**





Self Catering

A home-away-from-home

A self-catering break is the perfect choice for a home-from-home experience in Shropshire. One of the joys of self-catering in Shropshire is being able to take your holiday at your pace.

Wake when you want to, dine when you're ready. Enjoy buying and preparing for yourself wonderful food and drink from Shropshire and its surrounding counties. a cosy cottage made for two near Ellesmere, or a smart period residence for a friends' weekend in Ludlow. Perhaps you'd love a farmhouse or barn conversion deep in the Shropshire countryside, accommodating all your family. Or to live like landed gentry for a week in a Shropshire mansion?

Whatever style of self-catering holiday you're seeking, Shropshire has a wide range of properties ready to greet you. Want a woodburner? A welcome basket? It's easy to find the self-catering Shropshire break that suits your needs. Warmth and cosiness are virtually guaranteed. Pack some books or charge your Kindle and make for your perfect cottage break in Shropshire. Are you ready to book a staycation in beautiful Shropshire? Book direct from here for the best choice and prices.

The best holidays start here!

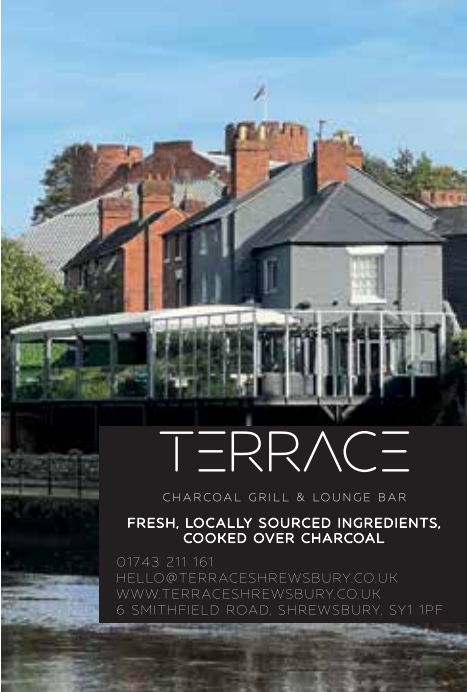
Make your holiday in Shrewsbury unforgettable. Set amidst the glorious Shropshire countryside, and our resort offers touring pitches and glamping.

www.love2stay.co.uk
Tel: 01743 583 124



LOVE2STAY

Emstrey Shrewsbury
Shropshire SY5 6QS



TERRACE

CHARCOAL GRILL & LOUNGE BAR

FRESH, LOCALLY SOURCED INGREDIENTS,
COOKED OVER CHARCOAL

01743 211 161
HELLO@TERRACESHREWSBURY.CO.UK
WWW.TERRACESHREWSBURY.CO.UK
6 SMITHFIELD ROAD, SHREWSBURY, SY1 1PF



 Planet
Doughnut

24 Claremont Hill
Shrewsbury
SY1 1RD

Call us on 01743 360200

- Seating
- Dog friendly
- Toilets
- Free wifi

Planet Doughnut

doughnuts • coffee • bakes

www.planetdoughnut.co.uk



EAT & DRINK

Discover our delicious food scene

Fed by rivers, rainfall and rich soil, Shropshire has a strong farming heritage. Not only does agriculture keep our views beautiful, it supports the production of amazing food and drink. Up and down Shropshire, you will find shops, eateries and markets proud to showcase the delicious meat, dairy and produce of our astonishingly fertile region.

THE BEEFY BOYS

BURGERS, BEERS & COCKTAILS

UK'S BEST BURGER & BEST BURGER CHEF OF THE YEAR 2023

100% HEREFORDSHIRE BEEF

TO BOOK A TABLE ONLINE GO TO **THEBEEFYBOYS.COM**

OLD MARKET, HEREFORD / 39 HIGH ST, SHREWSBURY / 70 REGENTS STREET, CHELTENHAM

f v @ THEBEEFYBOYS

Historic Coaching Inn set in the heart of The South Shropshire Hills, offering stylish accommodation and quality food in the delightful and charming market town of Bishop's Castle

The Castle Hotel, Bishops Castle SY9 5BN
01588 638 403
stay@thecastlehotelbishopscastle.co.uk
www.thecastlehotelbishopscastle.co.uk

Shifnal Balti

Cheers to good food!

Join us for a spectacular Indian cuisine experience that will ignite your taste buds and leave you with unforgettable memories.

www.shifnalbalti.co.uk
01952 460142
20-22 Broadway TFI1 8AZ Shifnal

ARITA
Winners
Curry Oscars
West Midlands 2023

Restaurants

Go gourmet in our delicious county

Shropshire has a well-deserved foodie reputation. This has a lot to do with our agricultural heritage. We have so much delicious meat, dairy and produce within easy reach, our restaurant chefs cannot help but be inspired. You'll find Shropshire is especially good at serving local, seasonal and organic dishes.

In Shropshire you'll find bright, ambitious chefs creating adventurous food with the produce of our region. Foraging has caught on in recent years. The growing demand for plant-based cooking means vegetarian and vegan diners in Shropshire have never had so much delicious choice.

One of the beautiful things about Britain is our appetite for international cuisine, reflecting our multicultural heritage and, well, our love of good food. Around Shropshire, and especially in our county town of Shrewsbury, you'll find restaurants representing the world's greatest cooking from mainland Europe, Asia and the Middle East.





relax

Come and take a short break treat with us at one of our luxury country properties

www.marringtonescapes.com

MYND HOUSE

— Bed & Breakfast On The Hill —

Mynd House is a historic Edwardian villa, located near Church Stretton in the Shropshire Hills (AONB).

www.myndhouse.co.uk



01694 722212

CHURCH STRETTON



Voted one of the Top Ten Best Small Towns in England *Which?* 2023

THE WHITE HORSE INN, CLUN

A REAL MICROBREWERY PUB AT THE HEART OF THE BEAUTIFUL TOWN OF CLUN

EIGHT ENSUITE ROOMS

BREAKFAST, LUNCH & DINNER EVERYDAY

01588 418 133

WHITEHORSECLUN.COM

"Warm, friendly welcome, nice food.

A proper pub that does food as opposed to being a gastropub/restaurant that serves drinks."





Pubs & Bars

Enjoy a real pint in a real Shropshire pub

Shropshire is beer drinkers' dream destination, with real ale pubs serving well-kept, locally brewed ales, craft beers and guest beers. Cosy fireplaces, low beams, the occasional ghost... even live music if you're lucky.

Pubs and food in Britain go hand in hand. Nowhere more so than in Shropshire, where we do both extremely well. From tasty bar snacks (think homemade scotch eggs or fat, delicious sausage rolls) to gourmet lunches, Shropshire will ensure you never drink on an empty stomach.



Shrewsbury's Great Local Pubs



COLEHAM TAP

Coleham, SY3 7DX

*Stunning river front views,
alfresco dining*

T: 01743 344557



THE OLD BELL

Abbey Foregate, SY2 6BA

*Serving traditional pub
classics, hotel rooms*

T: 01743 246185



THE PEACOCK

Wenlock Road, SY2 6JS

Serving traditional pub classics

T: 01743 355215



THE CORACLE

Sundorne Road, SY1 4RR

Bar snacks and Sunday carvery

T: 01743 272136



THE BEECHES

Lythwood Road, SY3 0NT

Serving traditional pub classics

T: 01743 384298



THE DOG AND PHEASANT

Severn Street, SY1 2JA

Near the river, famous for cask ale

T: 01743 588705



Shrewsbury is home to our collection of Great Local Pubs, whether its alfresco dining overlooking the River Severn, going back in time and indulging in a cold beer in a 17th Century traditional pub or a bite to eat on your way out of town, our Great Local Pubs have something for everyone.



THE LOGGERHEADS

Church Street, SY1 1UG
*Famous for cask ale, 1700s
old world pub*

T: 01743 362398



BULLS HEAD

Castle Gates, SY1 2AB
*Serving breakfast and
traditional pub classics*

T: 01743 588773



BOARS HEAD

Coleham SY3 7LL
Pub games and sport

T: 01743 369722



THE GROVE

Belle Vue, SY3 7NN
Pub games and sport

T: 01743 622908



HOP AND FRIAR

St Julian's Friars, SY1 1XL
Outdoor sport viewing

T: 01743 600028



INN ON THE GREEN

Bank Farm Road, SY3 6DU
Serving traditional pub classics

T: 01743 588385





APLEY FARM SHOP

Welcome to Apley Farm Shop,
where traditional farming, the
finest quality food and precious
family time, are at the heart of
our award-winning experience.

Just 4 miles from the quaint market
town of Bridgnorth, on the A442.
Open 7 days a week!

Apley Farm Shop - Butchery, Deli,
Bakery, local produce

Apley Kitchen - Onsite eatery

Apley Playbarn - Childrens indoor
playarea

Outdoor picnic & playarea

Annual Events

Onsite Concessions

Free Parking



 @apleyfarmshop  @apleyfarmshop

www.apleyesatate.co.uk
01952 581002

Apley Farm Shop, Norton, Shifnal, TF11 9EF

Cafés & Tea Rooms

Enjoy Shropshire's café culture

You don't need to travel far for sustenance in Shropshire. Our market towns and villages are packed with welcoming tea rooms and cafés ready to serve you breakfast, lunch and snacks with a smile. Or perhaps coffee and a slice of homemade cake?

If you're looking for a nice cream tea in Shropshire, be sure to ask for prune damson jam. The hearty prune damson, grown in Shropshire, creates a richly delicious jam that stands up beautifully against clotted cream on a scone.

In Shropshire you'll also find hip cafés producing exciting food, staffed by highly trained baristas serving the best coffee the world has to offer. Pop-ups, open-mic nights, and collaborations between businesses clearly show that Shropshire's café owners are open to innovation and fun.





Dog Friendly

It simply wouldn't be right to visit Shropshire and leave your best friend at home. With miles of footpaths, hills and woodland to explore, your dog will love Shropshire almost as much as you will.



VISIT SHROPSHIRE

© Published by Visit Shropshire. Designed by Blueprint Travel Media Ltd.

T: 01743 261919 | E: info@visitshropshire.co.uk

Photo Credits: Richard Bishop; Historic England/English Heritage Trust; Ian Tustin, Historic England; Justin Barton, © Historic England Shropshire Festivals; Richard Hammerton; Robin Fellows-Weir; Simon Whaley; Simon Cousins; Shropshire And Beyond/Mike Hayward; Jim Roberts; Steve Lacey, Shrewsbury Folk Festival; ©Barry Phillips; Visit Oswestry; Lee Lucks; Michael A. Sewell; Arcanum Design Solutions Limited; Visit Shropshire; Photopia Photography; deJetleyMarks Photography; Stewart Writtle; Visit Oswestry Graham Mitchell, Bob Greaves Photography; Barry Phillips Photography; Ashleigh Cadet; Shrewsbury BID.

Disclaimer: Whilst every effort has been made to ensure the accuracy and relevance of the information contained in this publication, alterations may occur after press date and it is advisable to confirm information with operators directly. Inclusion in this brochure does not imply a recommendation. Visit Shropshire cannot accept responsibility for any holiday loss, injury or damage sustained from whatever cause. Visit Shropshire is a not for profit organisation.

Proud patrons of
Visit Shropshire





Heart Of England

— TOURING - CAMPING - BAR —

Award-winning,
independent, family owned
touring park, just minutes
outside of Shrewsbury.



— HOLIDAY HOME PARK —

- 👉 Spacious Plots
- 👉 On-site Shop & Bar
- 👉 Dog Friendly
- 👉 10 Minutes from Shrewsbury
- 👉 Gateway to Wales
- 👉 Independent, Family Owned
- 👉 Secure, Gated Site
- 👉 Landscaped Grounds
- 👉 Beautiful Views of Earls Hill

Ford Heath Shrewsbury SY5 9GD
01743 821688 www.cartrefcaravansite.co.uk

PRINCE RUPERT
HOTEL
★★★★★



"4 star luxury in the very heart of Shrewsbury"

Following a significant £1 million renovation programme and the addition of a 4th AA star, the first of its kind within the town centre, the Grade II Listed Prince Rupert is now firmly established as the finest hotel within the heart of Shrewsbury. Just a stone's throw away from all of Shrewsbury's best attractions, the hotel is located within the town's most fashionable and cosmopolitan area on Butcher Row.



Family owned & managed since 1996

70 bedrooms including 12th & 15th Century historic suites

2 superb restaurants, Camellias Tea rooms & an Award-winning Executive Head Chef
Valet parking to our private town centre car park

Butcher Row, Shrewsbury, SY1 1UQ | Tel: 01743 499 955

reservations@princeruprterhotel.co.uk | www.princeruprterhotel.co.uk

